

V. Sex-Offender-Related Risk Factors Present, by Risk Classification Levels in the STATIC-99 and STABLE-2007

The following charts show the proportion of **higher** risk offenders with the most prevalent risk items present, as compared to the proportion of **lower** risk offenders. The charts also reveal the disparities (Δ) between offenders at the Low to Moderate-Low risk levels versus the Moderate-High to High risk levels on the STATIC-99 (Chart 3), and between offenders at the Low-Moderate risk level and the High risk level on the STABLE-2007 (Chart 4).

Chart 3: Percentage of Offenders with STATIC-99 Risk Factors Present, by Lower vs. Higher Risk Levels, FYs 2008 and 2009

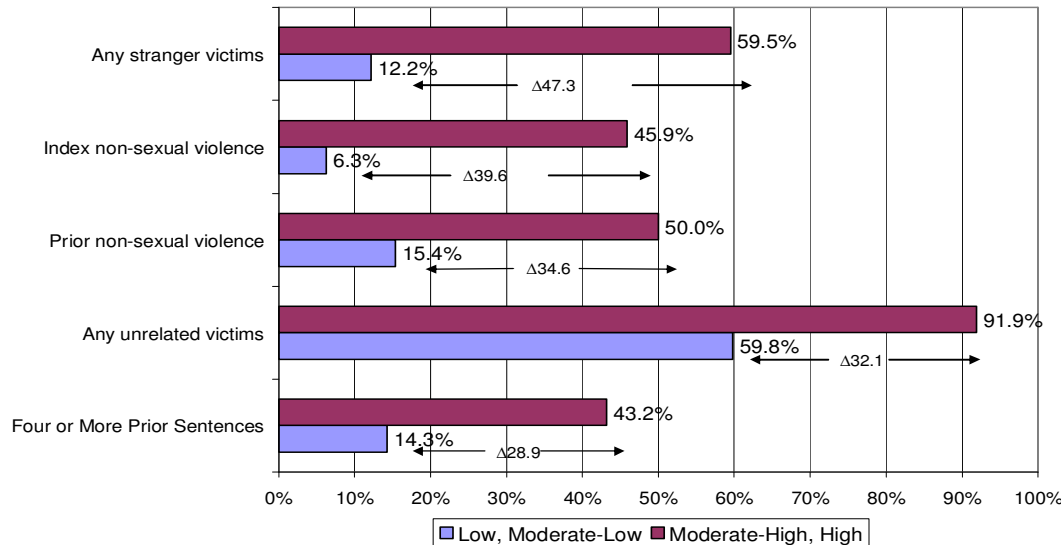
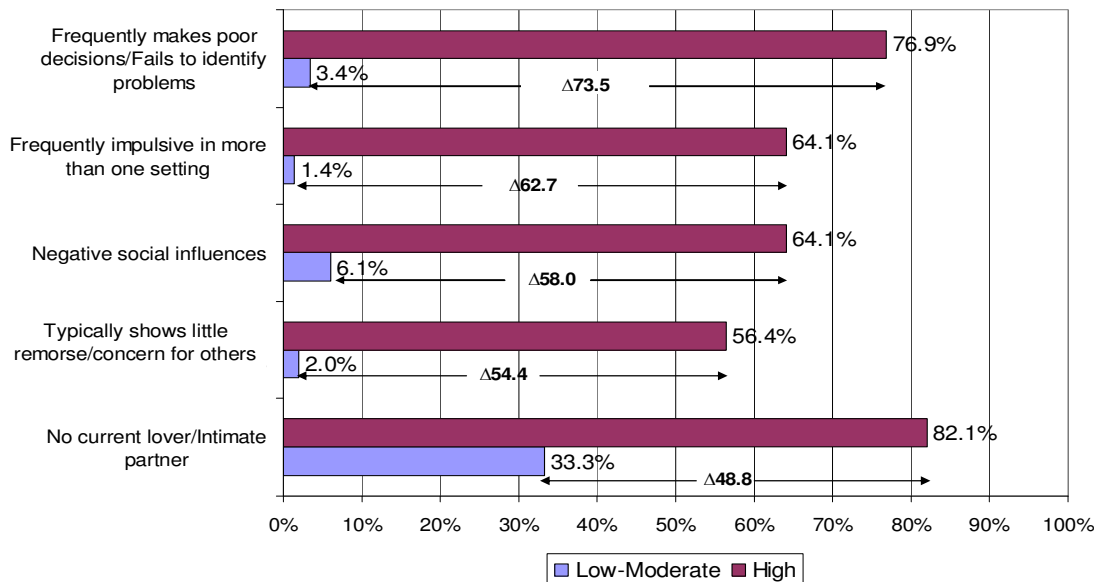


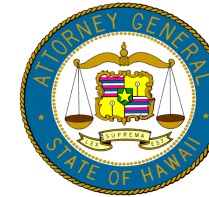
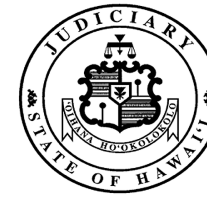
Chart 4: Percentage of Offenders with STABLE-2007 Risk Factors Present, by Lower vs. Higher Risk Levels, FYs 2008 and 2009



Findings: With respect to higher risk offenders, “any unrelated victims” was the most prevalent risk item, as indicated by 91.9% of higher risk offenders on the STATIC-99 (Chart 3), while “no current lover/intimate partner” was the most prevalent (82.1%) risk item indicated by higher risk offenders on the STABLE-2007 (Chart 4). The STATIC-99 risk item, “any stranger victims” had the greatest disparity in prevalence rate ($\Delta=47.3$) between Low to Moderate-Low and Moderate-High to High risk offenders. In the STABLE-2007 item, “frequently makes poor decisions/fails to identify problems” had the greatest disparity ($\Delta=73.5$) between the defined risk levels.

This report is available electronically at the ICIS web site: <hawaii.gov/icis>

Interagency Council on Intermediate Sanctions



HAWAII STATE
DEPARTMENT
OF HEALTH

State of Hawaii, FYs 2008 and 2009

June 2011

STATIC-99 and STABLE-2007 Sex Offender Risk Assessments

FINAL

Timothy Wong, ICIS Researcher,
Department of the Attorney General and
Maria Sadaya, Research Aide,
State of Hawaii Judiciary

This study is an analysis of STATIC-99 and STABLE-2007 risk instruments administered to sex offenders in FYs 2008 and 2009. Both instruments are actuarial risk assessments, validated for male sex offenders only, and used to predict sexual and violent recidivism. The STATIC-99 is a ten-item static (un-changeable) scale correlated with sex offense reconvictions for adult males. It provides a baseline for violent and sexual assault risk, although according to the authors, R.K. Hanson and D. Thorton, it does not address all relevant sex offender risk factors. The STATIC-99 provides a total score, and subsequently assigns interpretive risk ranges that classify offenders into four discrete categories: Low (≤ 1 pt.), Moderate-Low (2-3 pts.), Moderate-High (4-5 pts.), and High (≥ 6 pts.).

The STABLE-2007 is a 13-factor scaled instrument clustered along five major dimensions that are correlated with sexual deviancy. Developed by R.K. Hanson and A. Harris, the STABLE's five dimensions include: (1) significant social influences; (2) intimacy and relationship deficits; (3) general self-regulation and impulse control; (4) sexual self-regulation and sexual pre-occupation; and (5) cooperation with supervision. The STABLE provides a total score (26 max), and utilizes a classification system that separates risk scores into three discrete ranges: Low (0-3 pts.), Moderate (4-11 pts.), and High (≥ 12 pts.). The dynamic scales are sensitive to change upon reassessment.

KEY FINDINGS

STATIC-99:

- Hawaiians/part-Hawaiians (29%), and Filipinos (16%) are the primary ethnic groups represented.
- 49% are unemployed.
- 20.5% are classified at the Moderate-High and High risk levels.
- Offenders with multiple prior charges and convictions have the highest STATIC-99 risk score (7.0).
- Assaults against unrelated victims account for 66.4% of the offenses.
- Felony Sex Offenses account for 79% of the cases compiled.
- Felony Class A and C sex offenders have the lowest average score on the STATIC-99 (low risk) and STABLE (Moderate risk).
- The *any stranger victims* item has the widest risk disparity between Low-Low/Moderate and Moderate-High/High risk offenders ($\Delta=47.3\%$).

STABLE-2007:

- 21% of offenders are classified at the High risk level.
- Offenders who reported *frequent conflicts with women* have the highest STABLE risk scores (19.4).
- 43.6% of the offenders have *no current lover/intimate partner*.
- The *frequently makes poor decisions/fails to identify problems* item has the widest risk disparity between Low-Moderate and High risk offenders ($\Delta=73.5\%$).

STATIC-STABLE and LSI-R Combined:

- 35.4% of offenders identified as high risk in the STATIC-STABLE and LSI-R require case planning.

I. STATIC-99 and STABLE-2007 Risk Classification Levels

Table 1: Risk Classification levels for the STATIC-99 and STABLE-2007, FYs 2008 and 2009

STATIC-99 Risk Category			STABLE-2007 Risk Category		
National cutoffs	Freq.	Pct.	National cutoffs	Freq.	Pct.
Low (0-1)	134	37.1%	Low (0-3)	73	39.2%
Moderate-Low (2-3)	153	42.4%	Moderate (4-11)	74	39.8%
Moderate-High (4-5)	62	17.2%	High (≥ 12)	39	21.0%
High (≥ 6)	12	3.3%	<i>Total</i>	<i>186</i>	<i>100.0%</i>
<i>Total</i>	<i>361</i>	<i>100.0%</i>			

II. Demographics

The demographic data depicted in Table 2 reflect a statistical profile of sex offenders' gender, ethnicity, marital status, age range, employment, and educational attainment level.

Table 2: Descriptive Profile of Offenders Administered the STATIC-99, FYs 2008 and 2009

STATIC-99					
	Freq.	Pct.		Freq.	Pct.
Age Range			Gender		
<20 years	9	2.5%	Male	360	100.0%
20-29 years	89	24.7%	Total	360	100.0%
30-39 years	93	25.8%			
40-49 years	90	25.2%	Ethnicity		
50-59 years	46	12.7%	Caucasian	63	17.5%
60-69 years	21	5.8%	African American	20	5.6%
70+ years	12	3.3%	Filipino	58	16.1%
Total	360	100.0%	Hawaiian/pt-Hawn	104	28.9%
			Japanese	20	5.6%
Employment			Mixed (not Hawn)	22	6.1%
Employed	157	49.7%	All Others	73	20.3%
Student	3	0.9%	Total	360	100.0%
Unemployed (1-3 months)	23	7.3%			
Unemployed (3+ months)	133	42.1%	Marital Status		
Total	316	100.0%	Divorced	57	15.8%
			Married	121	33.6%
Education Level			Separated	11	3.1%
Less than High School	95	29.6%	Single	160	44.4%
High School Graduate	163	50.8%	Widowed	11	3.1%
Post High School	63	19.6%	Total	360	100.0%
Total	321	100.0%			

Findings: The sex offender demographics reveal an average age of 40 years old, with 78% of the offenders under the age of 50. With respect to marital status, approximately 44% of the offenders are single, while an additional 22% are either separated, divorced, or widowed. The largest (self-reported) ethnic groups of sex offenders are the Hawaiian/part-Hawaiian (29%), followed by the Caucasian (17.5%), and Filipino (16%) groups. Additionally, 42% of the sex offenders are unemployed (three or more months), while 30% have less than a high school education.

III. STATIC-99 and STABLE-2007 Rankings by Average Score, Risk Item Prevalence

The following tables reveal the highest average STATIC-99 and STABLE-2007 scores when an individual risk item is present (Table 3), and the prevalence of the most reported risk items (Table 4). The data in Table 4 show an interesting relational association in the STATIC-99 where sex offenders have the highest statistical propensity to assault unrelated (but known) victims, while indicating in the STABLE-2007 that they have no current lover or intimate partner. However, there is a research need to further investigate the relationship between sex offenders who assault unrelated but known victims (acquaintance rapes), and who lack current intimate partners.

Table 3: Highest Average Scores, by Identified Risk Item, FYs 2008 and 2009

STATIC-99 (n=360)			STABLE-2007 (n=186)		
	Freq.	Ave. Score		Freq.	Ave. Score
Charges 6+ or Convictions 4+	5	7.0	Frequently in conflict with women	7	19.4
Charges 3-5 or Convictions 2-3	8	4.5	Dwells on negative emotions/Feels complete hopelessness	12	18.0
Convictions for non-contact sex offenses	32	4.1	Negative emotions/Life events invoke sexual thoughts	16	17.0
Index non-sexual violence	52	4.0	Typically shows little remorse/concern for others	25	16.7
Any stranger victim	79	3.9	Clear evidence of sexual preoccupation in multiple areas	20	16.5

Table 4: Most Frequently Reported Risk Items in the STATIC-99 and STABLE-2007, FYs 2008 and 2009

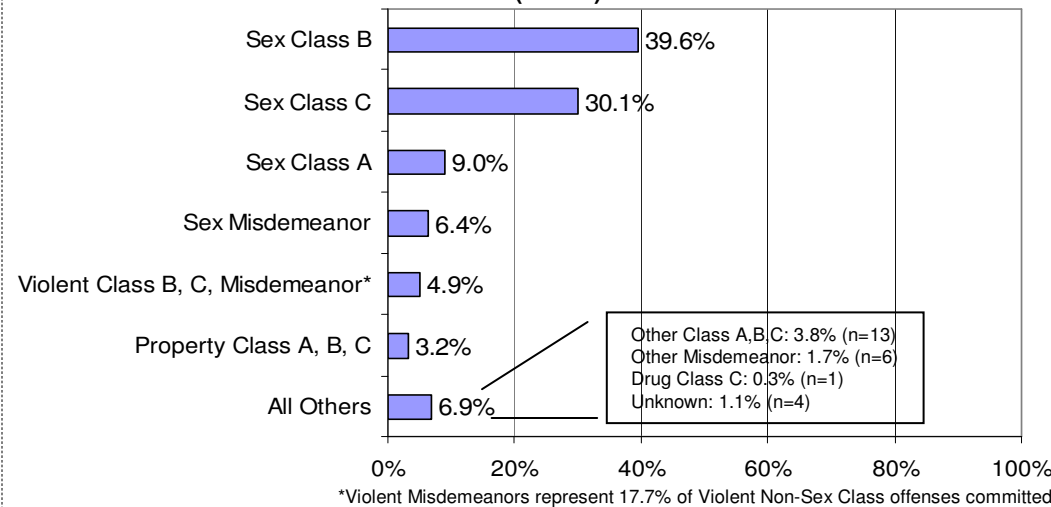
STATIC-99 (n=360)			STABLE-2007 (n=186)		
Highest Percentage of Risk Factors Present	Freq.	Pct.	Highest Percentage of Risk Factors Present	Freq.	Pct.
Any unrelated victims	239	66.4%	No current lover/intimate partner	81	43.6%
Have not lived with a lover (2+ yrs)	110	30.5%	Frequently makes poor decisions/Fails to identify problems	35	18.8%
Prior non-sexual violence	81	22.4%	Negative social influences	34	18.3%
Any stranger victims	79	21.9%	Typically shows little remorse/concern for others	25	14.9%
Four or more prior sentencing	73	20.2%	Frequently impulsive in more than one setting	27	14.5%

Findings: Offenders with the reported risk items, *6+ charges or 4+ convictions* and *3-5 charges or 2-3 convictions* have the highest average STATIC-99 scores, however, the small number of offenders makes for an unreliable finding (Table 3). Offenders with the item, *convictions for non-contact sex offenses* (N=32) have the next highest STATIC-99 score (4.1). With respect to the STABLE-2007, offenders who are *frequently in conflict with women* (N=7) have the highest STABLE score (19.4), however, the small number of offenders makes the data suspect. Offenders with the item, *negative emotions/life events invoke sexual thoughts* (N=16) have the next highest average STABLE score (17.0). In Table 4 offenders identified the item, *any unrelated victims assaults* (66.4%), as the most prevalent STATIC-99 item, while *no current lover or intimate partner* (43.6%), was the most prevalent STABLE-2007 item.

IV. Severity of Offenses Committed by Sex Offenders

The chart below shows the severity of offenses committed by sex offenders in FYs 2008 and 2009 (Chart 1). Table 5 depicts the average STATIC-99, STABLE-2007, and LSI-R scores based on the types of offenses committed.

Chart 1
Adjudicated Offenses Committed, by Sex Offenders who were Administered the STATIC-99 in FYs 2008 and 2009 (N=346)



Findings: The highest proportion of adjudicated offenses, compiled from the STATIC-99 come from felony sex crimes (78.7%), and include Class A (9.0%), Class B (39.6%), and Class C (30.1%) sex offenses. Sex offense misdemeanors account for 6.4% of the STATIC-99 respondents, while 6.9% of offenses committed come from a consolidated (All Others) group that include Class A, B, and C non-sex offenses, and other misdemeanors. Violent (non-sex assault) class felonies and misdemeanors, account for less than 5% of the respondents, followed by property class felons (3.2%).

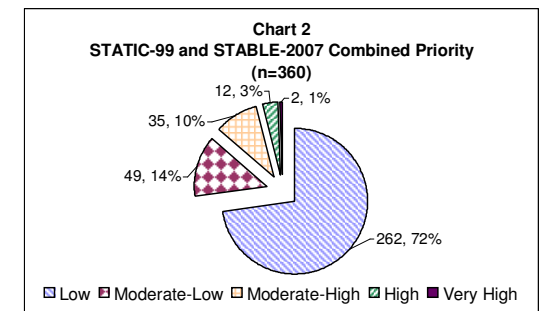
Table 5: Average Scores on the STATIC-99, STABLE-2007, and LSI-R, by Severity of Adjudicated Offenses

	STATIC-99		STABLE-2007		LSI-R	
	Mean	N	Mean	N	Mean	N
Sex Class A	1.71	31	4.65	17	15.42	31
Sex Class B	2.28	137	6.59	70	18.60	137
Sex Class C	1.85	104	5.95	57	16.33	104
Sex Misdemeanor	2.41	22	10.80	5	15.60	22
Violent Class A, B, C, Misdemeanor	3.29	17	6.89	9	18.53	17
Property Class A, B, C, Misdemeanor	4.09	11	11.67	6	23.00	11
All others	2.96	21	10.82	11	17.71	24
Average Score	2.28	346	6.77	175	17.52	346

Findings: Table 5 shows the STATIC-99, STABLE-2007, and LSI-R mean scores, specified by the severity of offenses committed. The LSI-R is a nationally-validated predictive instrument administered to adult criminal offenders. Class A thru C sex offenses and violent (assault) offenses are respectively classified in the Moderate-Low and Moderate risk levels in the STATIC-99 and STABLE-2007 (see Table 1 for risk level cutoff values), but are administratively (score<19) classified by the LSI-R. Interestingly, property class felons have the highest mean scores for all three risk instruments, placing these offenders in the Moderate-High, Moderate, and Medium risk level, respectively, in the STATIC-99, STABLE-2007, and LSI-R. It is unclear why property offenders in all classes are at higher risk than the sex or violent offenders, except that probation officers may have pre-assessed these offenders for high risk criminal behaviors, or had previous sex offense convictions.

V. Sex Offender Case Planning Targets (Combined Priority)

Chart 2 combines the STATIC-99 and STABLE-2007 risk levels into sex offender consolidated risk priorities. The sex offender case planning matrix in Table 6 shows the proportion of offenders at various levels of elevated risk after combining the STABLE-2007 with the LSI-R risk levels.



Findings: In Chart 2, approximately 72% of the offenders are classified at low risk, while 3.9% are classified at the High and Very High risk levels.

Table 6: Sex Offender Case Planning Matrix (STABLE 2007 and LSI-R)

Stable Risk Category		LSI-R Risk Combined			Total
		Administrative-Low	Medium	High-Surveillance	
High	High	17 (9.7%)	9 (5.1%)	13 (7.4%)	39 (22.3%)
	Moderate	49 (28.0%)	8 (4.6%)	14 (8.0%)	71 (40.6%)
	Low	49 (28.0%)	7 (4.0%)	9 (5.1%)	65 (37.1%)
	Total	115 (65.7%)	24 (13.7%)	36 (20.6%)	175 (100.0%)

Findings: Table 6 is a Case Planning Matrix that combines the STABLE-2007 risk class with three combined risk levels in the LSI-R. The shaded cells represent combined high risk groups that will require case planning (per ICIS policy). The data reveal case planning needs for 62 (35.4%) High risk offenders established by the STABLE-2007 and LSI-R.