

Interagency Council on Intermediate Sanctions



HAWAII STATE
DEPARTMENT
OF HEALTH

June 2007

John Hisashima, ICIS Research Analyst

LSI-R & ASUS Report for the County of Kauai (FY 2004 through FY 2006)

This report is a compilation of LSI-R and ASUS records taken from a January 2007, CYZAP download. The trend analyses in this report are specific to the County of Kauai and examine the change in LSI-R and ASUS Initial Assessment statistics for Fiscal Years 2004 through 2006. The figures depicted below represent statistical summaries for the following areas: (1) Demographics; (2) LSI-R Statistics; (3) ASUS Statistics; and (4) Treatment Level. The county-specific analyses in this report supplement the statewide analyses presented in the larger, *LSI-R & ASUS Year-End Report* (May 2007).

For further information contact:

John Hisashima
ICIS Research Analyst
Hawaii State Judiciary
Telephone: 586-1446
Email: John.T.Hisashima@hawaii.gov
ICIS Web Site: hawaii.gov/icis

A. Demographics

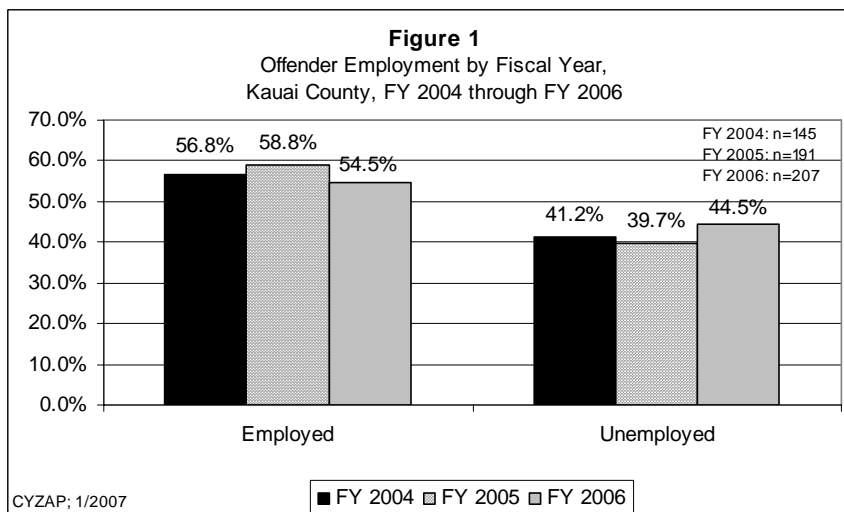


Figure 1: For all three years, the majority of offenders were employed.

- The percentage of unemployed offenders increased by 8.0% between FY 2004 (41.2%) and FY 2006 (44.5%).

(Note: Figure 1 does not include the student category.)

B. LSI-R Statistics

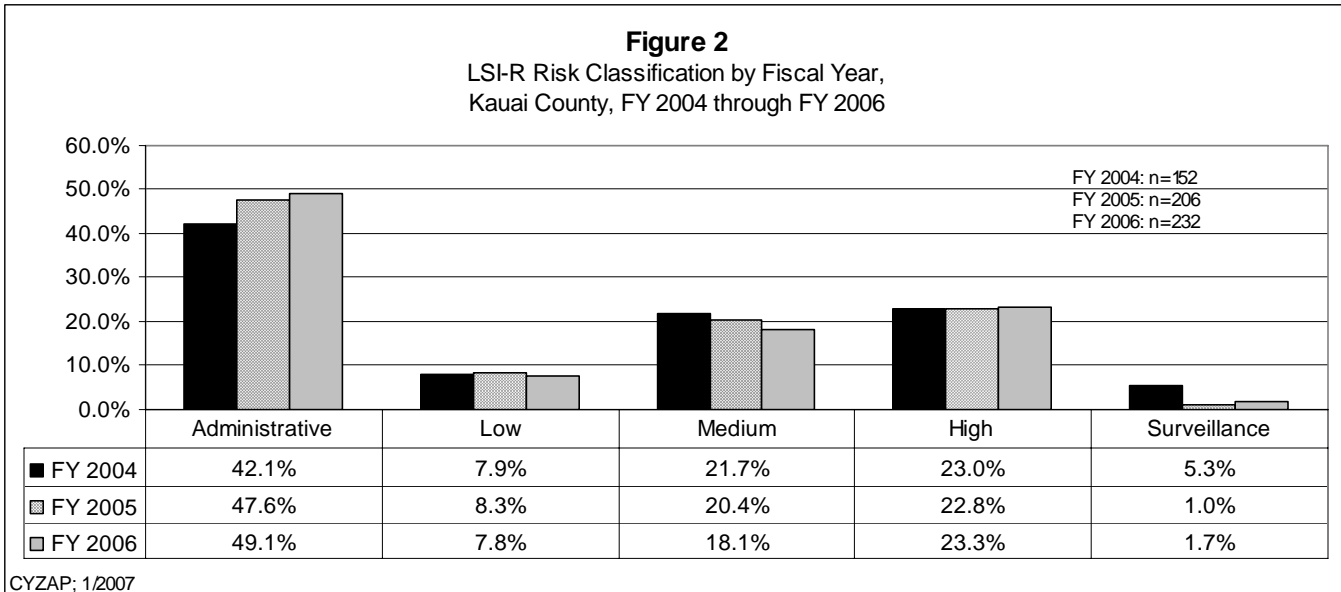


Figure 2: The percentage of offenders classified at the *Administrative* risk level increased by 16.6% between FY 2004 (42.1%) and FY 2006 (49.1%).

- The percentage of offenders classified at the *Surveillance* risk level decreased by 67.9% between FY 2004 (5.3%) and FY 2006 (1.7%).

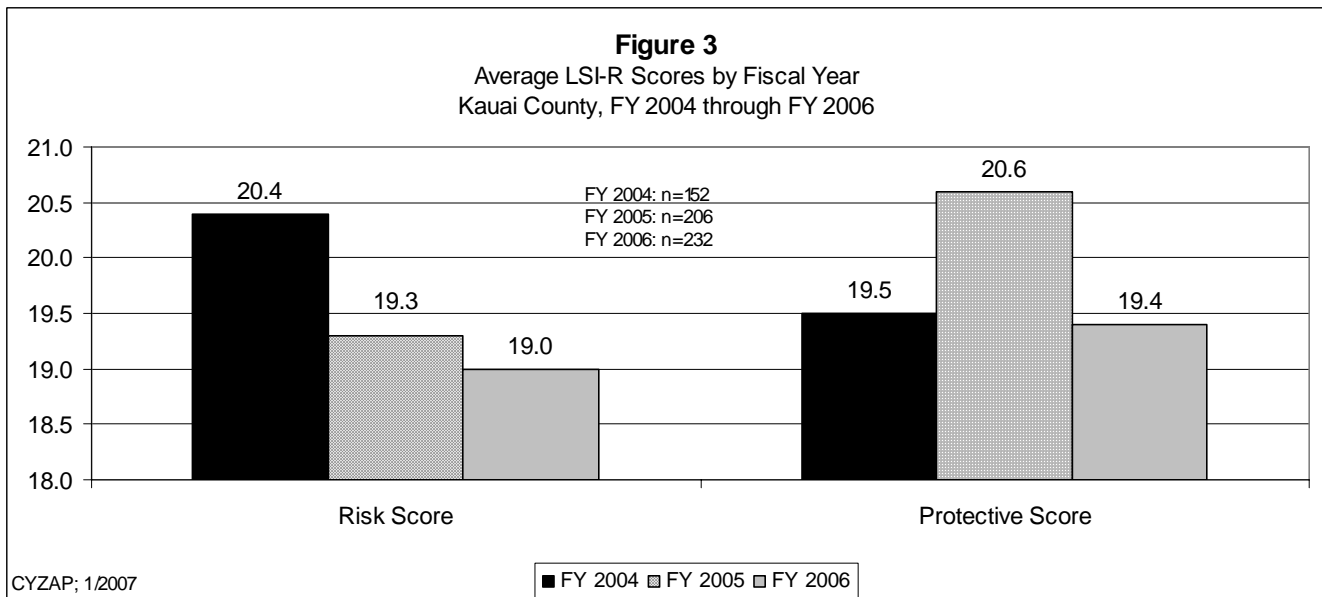
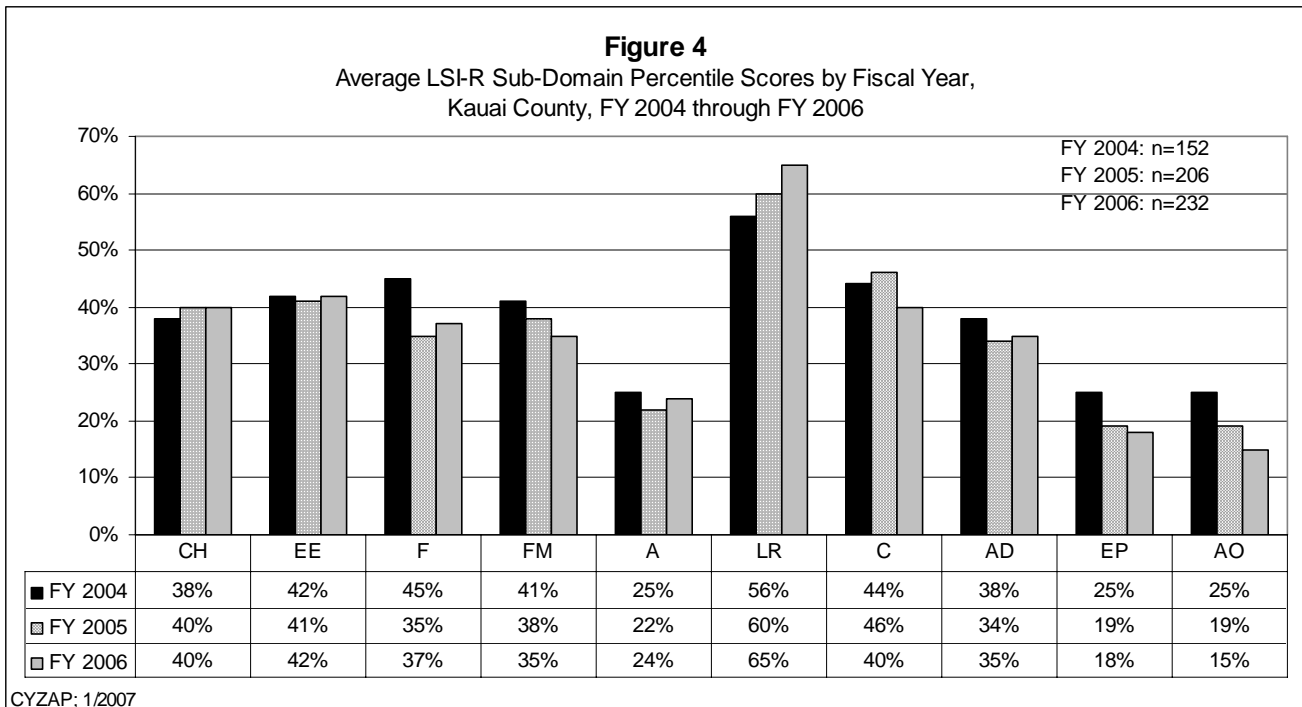


Figure 3: Average Risk Scores for all three years fall within the Moderate range (19-28).

- Average Risk Scores decreased by 6.9% between FY 2004 (20.4) and FY 2006 (19.0).
- Average Protective Scores decreased by 5.8% between FY 2005 (20.6) and FY 2006 (19.4).



Legend

- CH Criminal History Percentile
- EE Education and Employment Percentile
- F Financial Percentile
- FM Family and Marital Percentile
- A Accommodation Percentile
- LR Leisure and Recreation Percentile
- C Companions Percentile
- AD Alcohol and Drugs Percentile
- EP Emotional and Personal Percentile
- AO Attitudes and Orientation Percentile

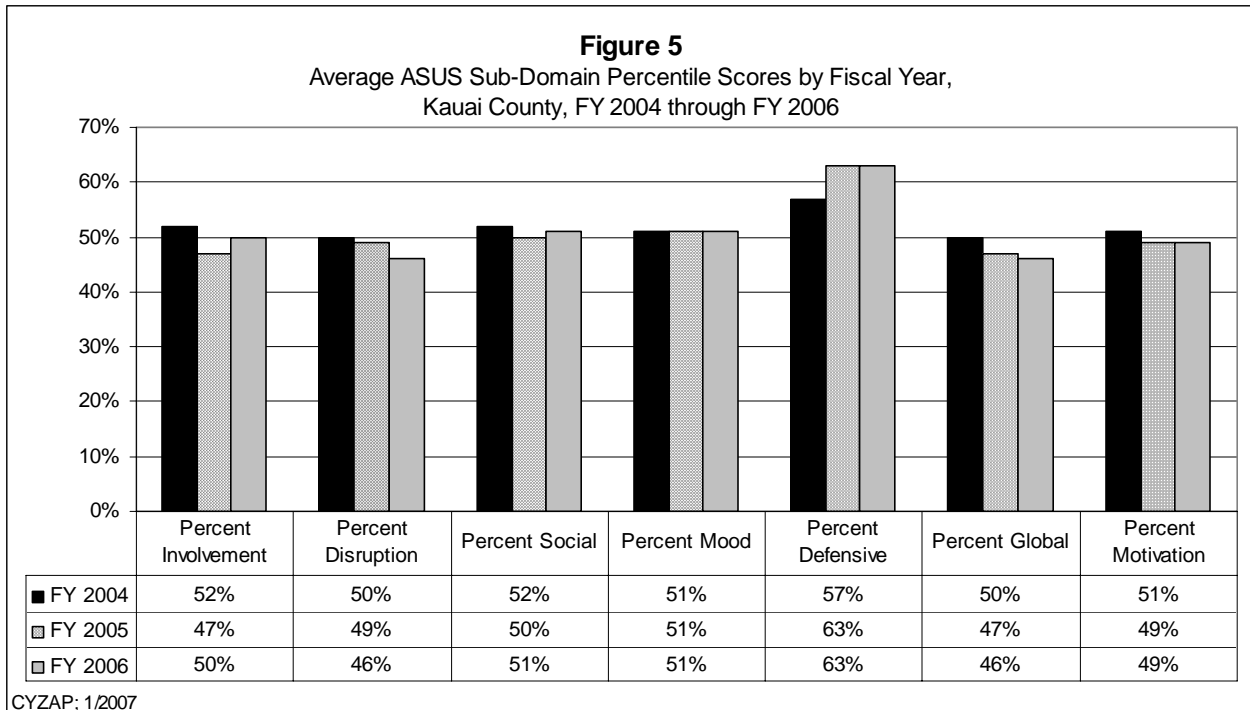
Figure 4: Based on national percentiles, *Leisure/Recreation* accounted for the highest LSI-R sub-domain percentile score for all three years: FY 2004 (56%); FY 2005 (60%); and FY 2006 (65%).

- Scores for seven of the 10 sub-domains decreased from FY 2004 through FY 2006; *Financial* (down 8.0 percentage points), *Family/Marital* (down 6.0 percentage points), *Accommodation* (down 1.0 percentage point), *Companions* (down 4.0 percentage points), *Alcohol/Drugs* (down 3.0 percentage points), *Emotional/Personal* (down 7.0 percentage points), and *Attitudes/Orientation* (down 10.0 percentage points).
- *Leisure/Recreation* accounted for the largest percentage point increase (9.0) between FY 2004 (56%) and FY 2006 (65%).

Technical Notes:

- Higher sub-domain percentile scores indicate more severe criminogenic needs.

C. ASUS Statistics



Subjects (n):

FY 2004: 149

FY 2005: 198

FY 2006: 222-223, depending on missing data for specific sub-domains.

Figure 5: Scores for five of the seven sub-domains decreased from FY 2004 to FY 2006; *Involvement* (down 2.0 percentage points), *Disruption* (down 4.0 percentage points), *Social* (down 1.0 percentage point), *Global* (down 4.0 percentage points), and *Motivation* (down 2.0 percentage points).

- *Defensive* accounted for the highest sub-domain score for all three years: FY 2004 (57%); FY 2005 (63%); and FY 2006 (63%).
- *Defensive* was the only sub-domain that increased from FY 2004 (57%) to FY 2006 (63%).

Technical Notes:

- *Involvement* percentiles above 60% indicate a history of extensive drug use and most likely a polydrug use pattern.
- *Disruption* percentiles between 40-50% strongly suggest the need for treatment services, while percentiles above 50% represent a clear need for treatment services.
- *Mood* percentiles above 40% strongly suggest the need for a mental health assessment.

Source: Wanberg, K. (2006). A Workshop on Case Planning Utilizing the LSI-R and ASUS: A Convergent Validation Model. Unpublished manuscript provided by author.

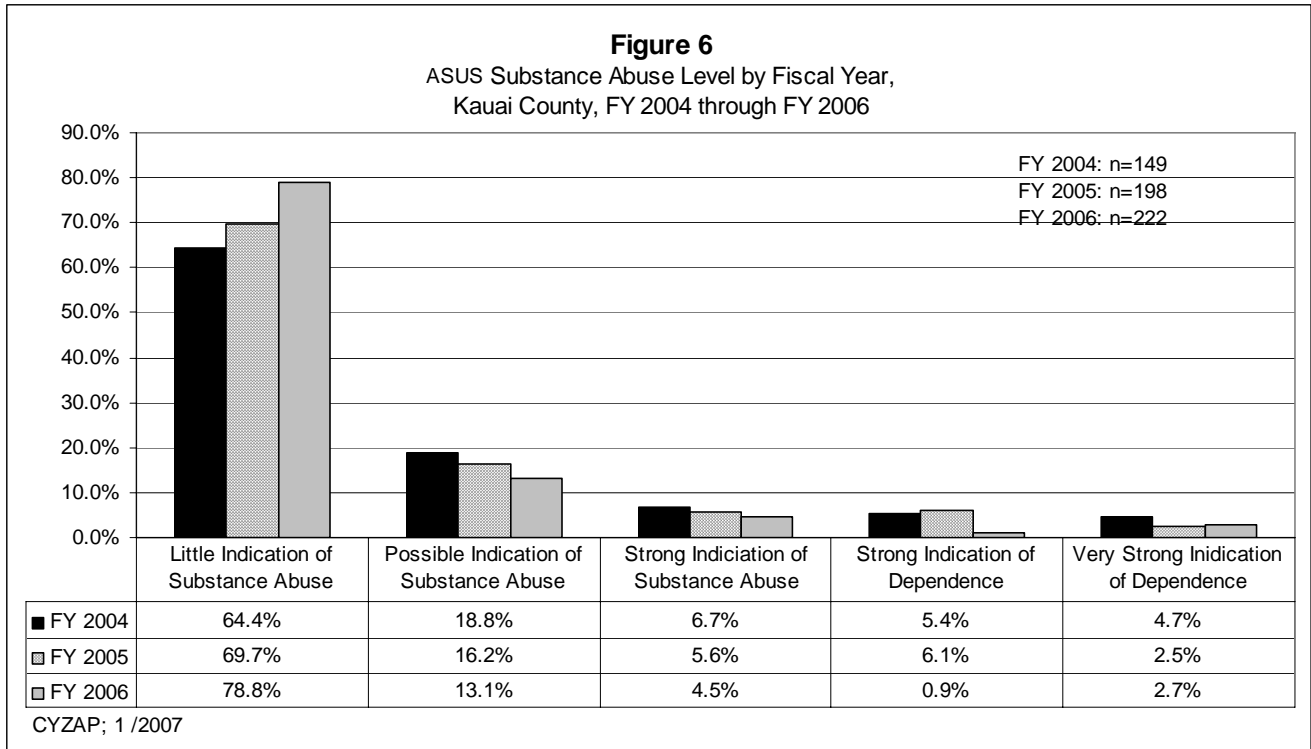


Figure 6: For all three years, over 80% of offenders were classified at the two lowest substance abuse levels, *Little Indication of Substance Abuse* and *Possible Indication of Substance Abuse*.

- *Little Indication of Substance Abuse* accounted for the largest percentage increase (22.4%) between FY 2004 (64.4%) and FY 2006 (78.8%).
- *Strong Indication of Dependence* accounted for the largest percentage decrease (83.3%) between FY 2004 (5.4%) and FY 2006 (0.9%).
- *Possible Indication of Substance Abuse* accounted for the second largest percentage decrease (30.3%) between FY 2004 (18.8%) and FY 2006 (13.1%).

D. LSI-R/ASUS Treatment Level

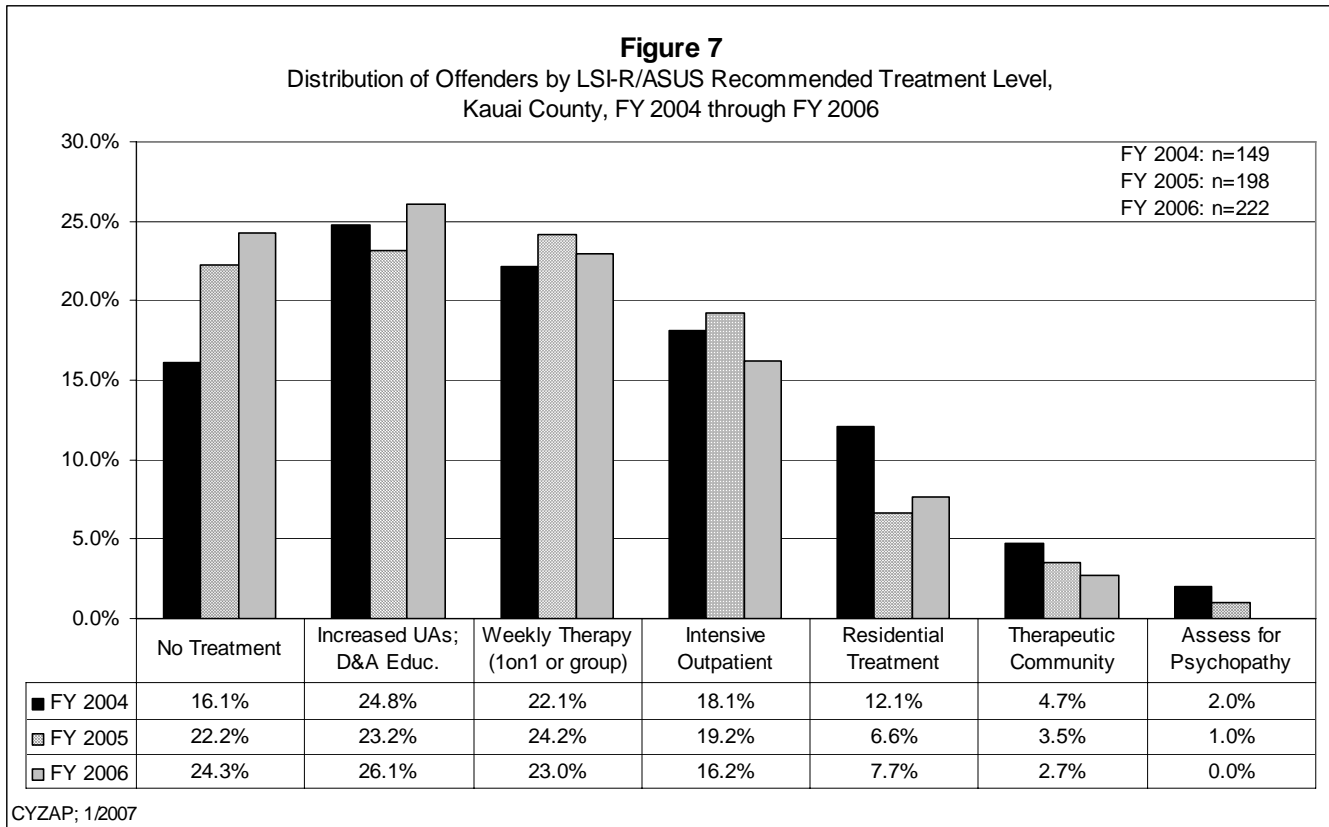


Figure 7: *Assess for Psychopathy* was the least commonly recommended treatment level for all three years: FY 2004 (2.0%); FY 2005; (1.0%); and FY 2006 (0.0%).

- *Increased UAs/D&A Education* was the most commonly recommended treatment level in FY 2004 (24.8%) and FY 2006 (26.1%).
- *Weekly Therapy* was the most commonly recommended treatment level in FY 2005 (24.2%).
- *No Treatment* accounted for the largest percentage increase (50.9%) between FY 2004 (16.1%) and FY 2006 (24.3%).
- *Assess for Psychopathy* accounted for the largest percentage decrease (200.0%) between FY 2004 (2.0%) and FY 2006 (0.0%).