

# Interagency Council on Intermediate Sanctions



HAWAII STATE  
DEPARTMENT  
OF HEALTH

September 2006

Timothy Wong, Project Researcher  
Department of the Attorney General

## LSI-R & ASUS Baseline, January 2002 – July 2006 (Initial Assessments as of 7/06)

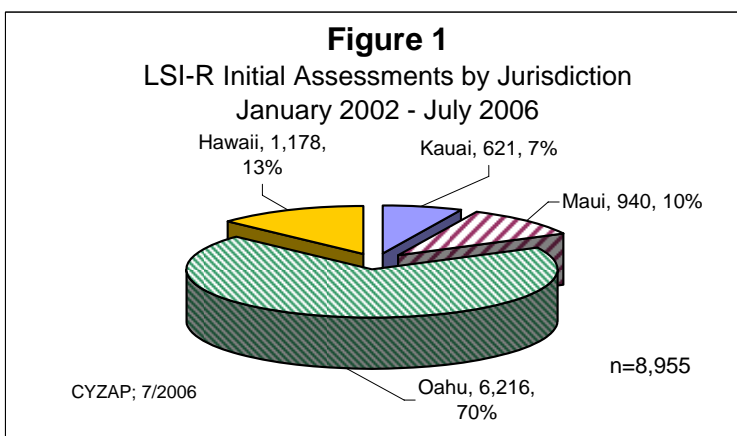
This report is a compilation of LSI-R and ASUS records from CYZAP downloads for the January 2002 - July 2006 period. It represents an unduplicated count of 8,955 initial assessments summarized by Judicial Circuits. The figures depicted below represent statistical summaries for the following areas; 1) Service Centers, 2) Demographics, 3) LSI-R Scores, 4) ASUS Scores, 5) Treatment Level, and 6) Problem Areas. The selected statistical indicators represent an initial baseline of offender profile data, which include LSI-R Risk and Protective scores and ASUS sub-domain percentiles by individual jurisdictions, and statewide average. Statistical tests were applied to some of the figures for the purpose of distinguishing the differences between LSI-R and ASUS sub-domain scores and Judicial Circuits.

### For further information contact:

Timothy Wong, Research and Statistics Branch  
Crime Prevention and Justice Assistance Division  
Department of the Attorney General  
Ph. #: 587-6399  
Email: [timothy.i.wong@hawaii.gov](mailto:timothy.i.wong@hawaii.gov)

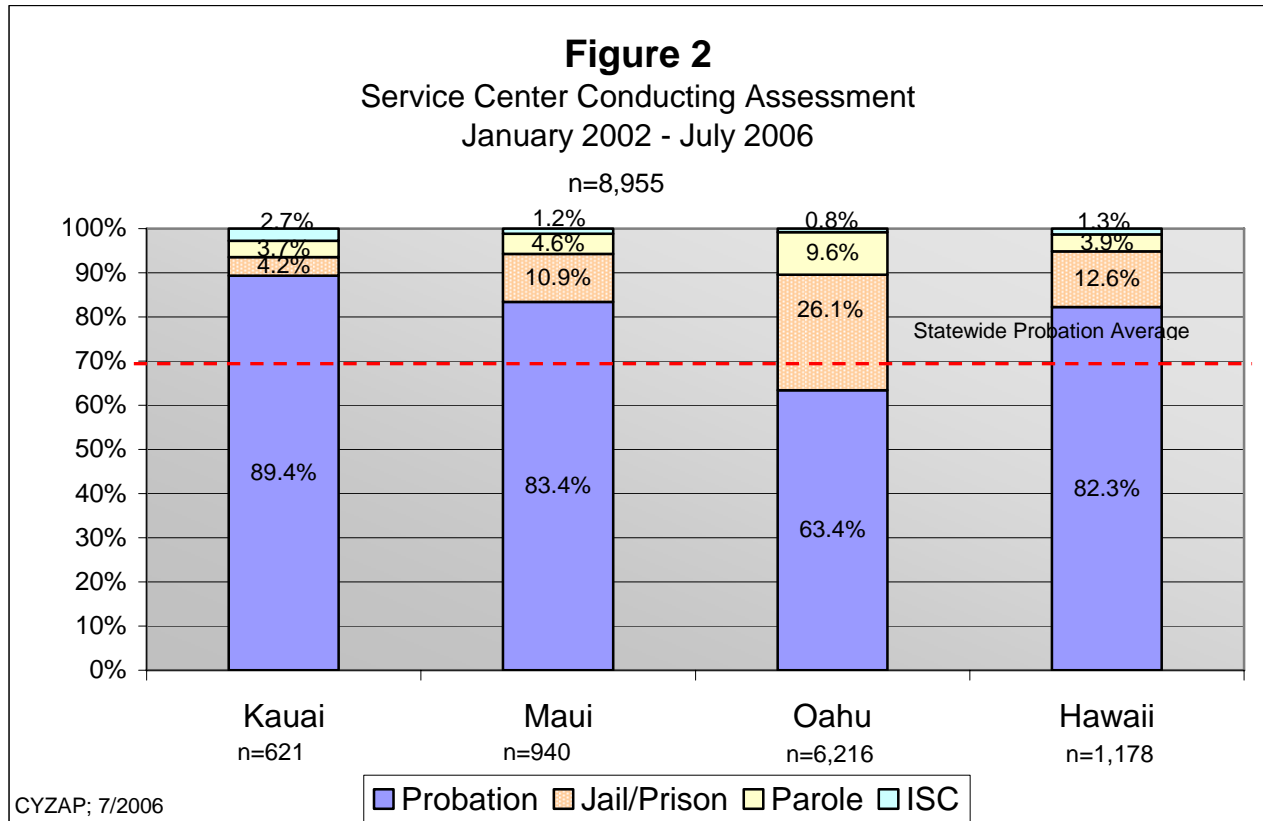
ICIS Web Site: [hawaii.gov/icis](http://hawaii.gov/icis)

## I. Service Center Statistics



**Figure 1:** From January 2002 - July 2006, field officers completed 8,955 LSI-R initial assessments.

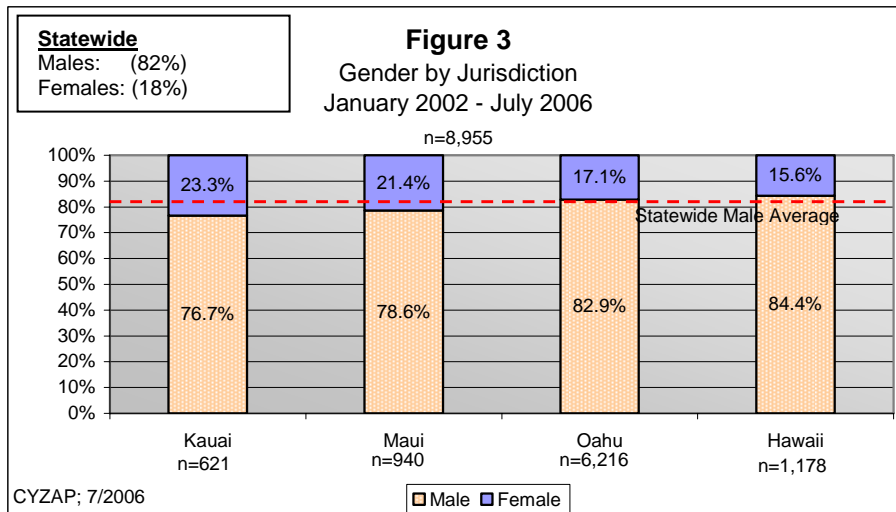
- Oahu offenders account for 6,216 LSI-R assessments, representing 70% of all assessments.



**Figure 2:** Statewide, *Probation* conducted 6,251 (70%) and *Jail/Prison* conducted 1,901 (21%) LSI-R initial assessments.

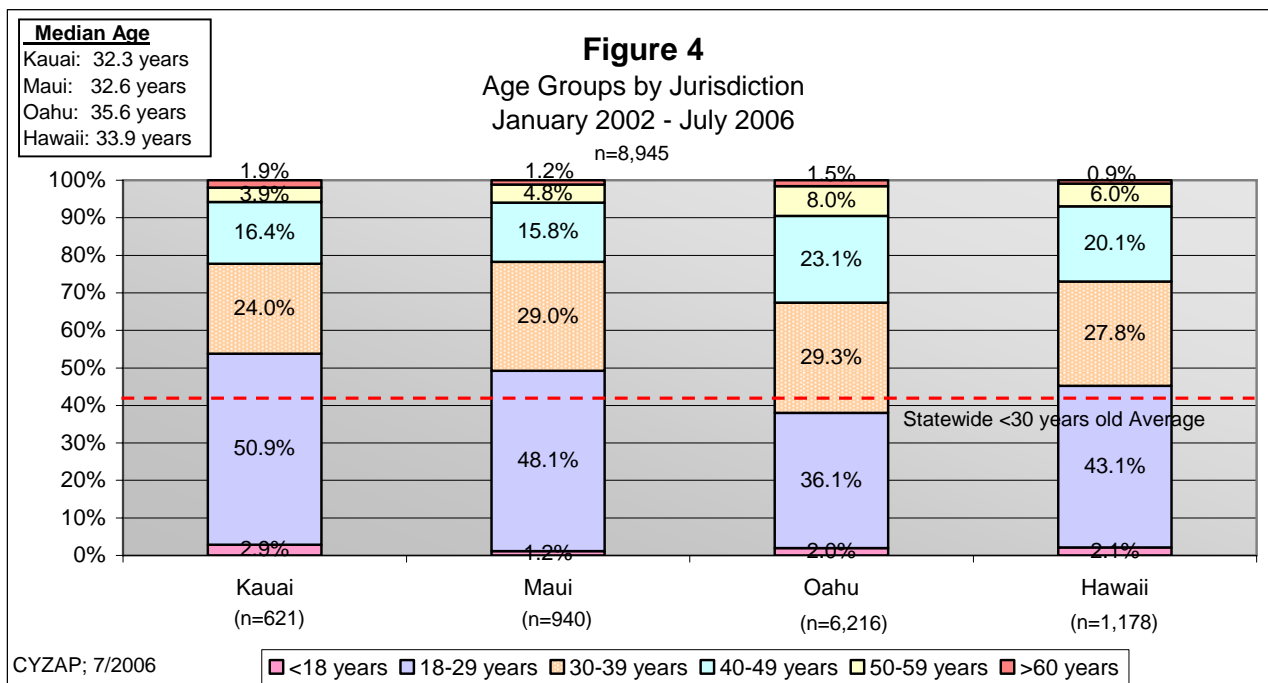
- Probation conducted the lowest percentage (63.4%) of LSI-R assessments on Oahu.
- Probation conducted the highest percentage (89.4%) of LSI-R assessments on Kauai.
- Jail/Prison conducted the highest percentage (26.1%) of LSI-R assessments on Oahu.
- Parole conducted the highest percentage (9.6%) of LSI-R assessments on Oahu.

## II. Demographics



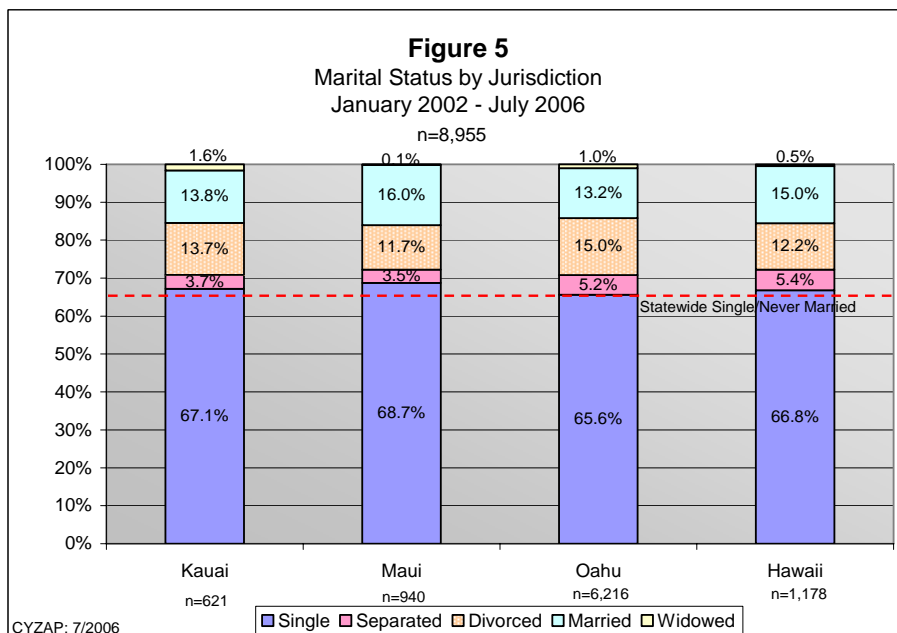
**Figure 3:** Statewide, males represent 82% of offenders with LSI-R and ASUS assessments.

- Kauai offenders have the highest percentage (23.3%) of females.
- Hawaii County offenders have the lowest percentage (15.6%) of females.



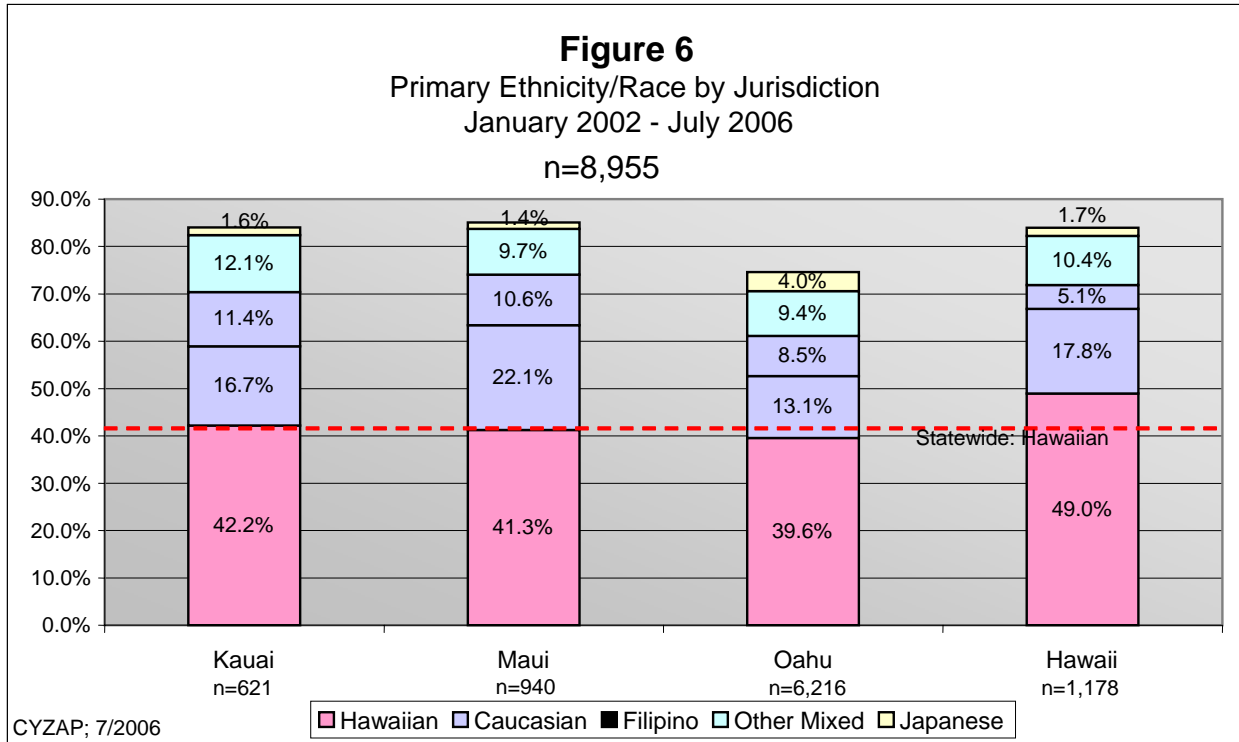
**Figure 4:** The statewide median age of offenders is 34.8 years.

- Kauai offenders have the highest percentage (53.8%) of offenders under 30 years old, compared to 41% of offenders statewide.
- Oahu offenders have the highest median age (35.6 years).



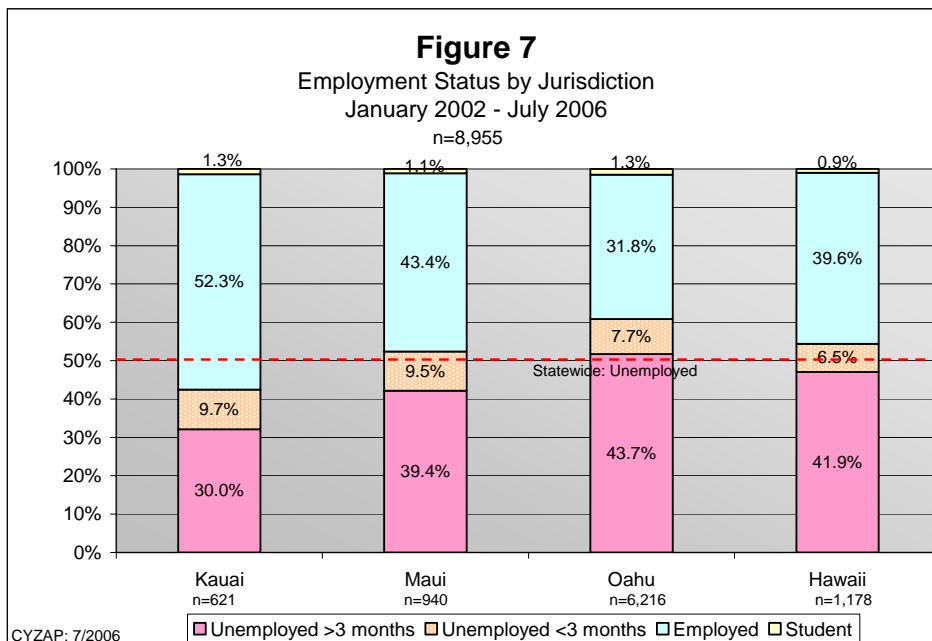
**Figure 5:** Statewide, 66% of offenders are single or never married, compared to 14% of married offenders.

- Maui offenders have the highest percentage (68.7%) of single offenders.
- Oahu offenders have the highest percentage (15.0%) of divorced offenders.



**Figure 6:** Statewide, 41% of offenders are Hawaiian, followed by Caucasian (15%), Filipino (8.5%), Other Mixed (9.7%), and Japanese (3.3%).

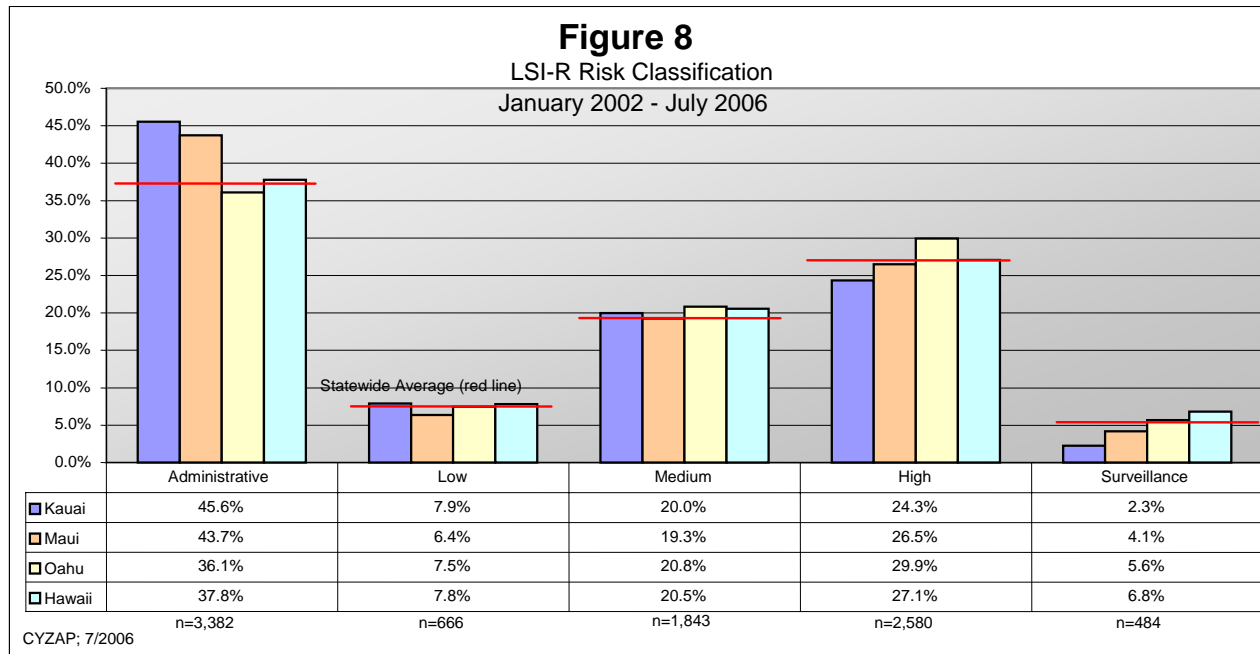
- Hawaii County offenders have the highest percentage (49.0%) of Hawaiians.
- Kauai offenders have the highest percentage (11.4%) of Filipinos.
- Maui offenders have the highest percentage (22.1%) of Caucasians.



**Figure 7:** Statewide, 50% of offenders are unemployed, while 35.5% are employed.

- Oahu offenders have the highest percentage (51.4%) of unemployment.
- Kauai offenders have the lowest percentage (39.7%) of unemployment.

### III. LSI-R Scores

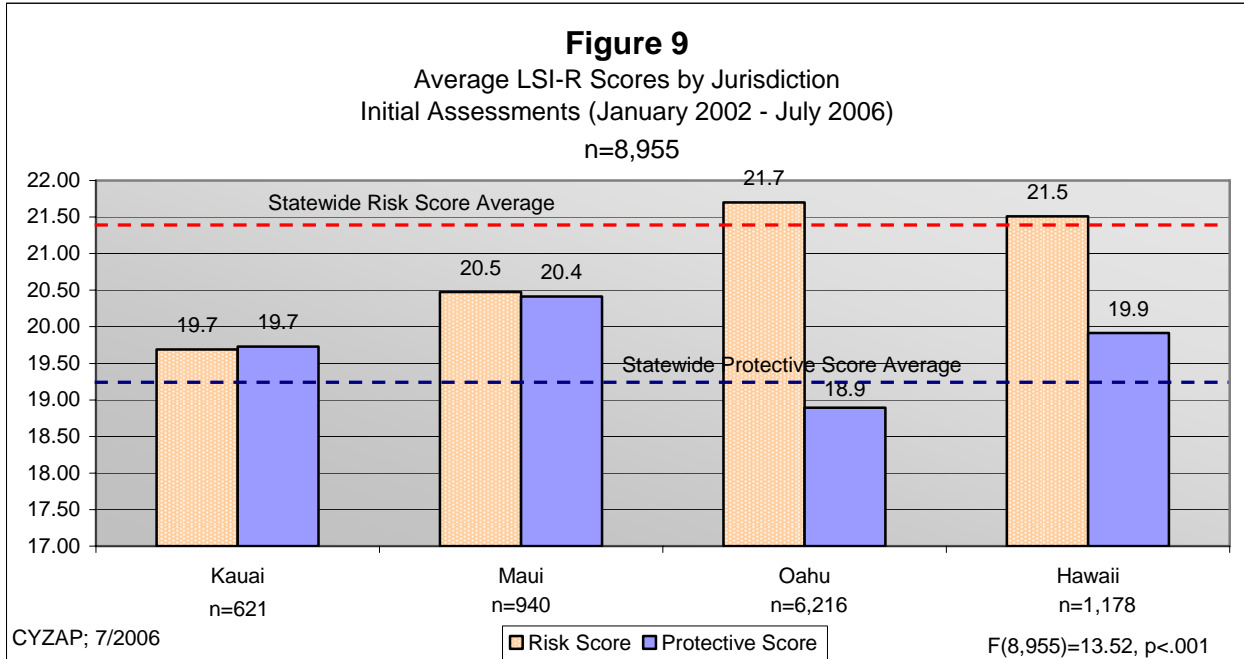


**Figure 8:** Statewide, 38% of the offenders are at the *Administrative* level of LSI-R-Risk Classification, compared to 5% of the offenders at the *Surveillance* level.

- Kauai (45.6%) and Maui (43.7%) offenders have the highest rate of *Administrative* level offenders.
- Hawaii County (6.8%) offenders have the highest rate of *Surveillance* level offenders.
- Oahu (29.9%) offenders have the highest rate of *High* risk offenders.

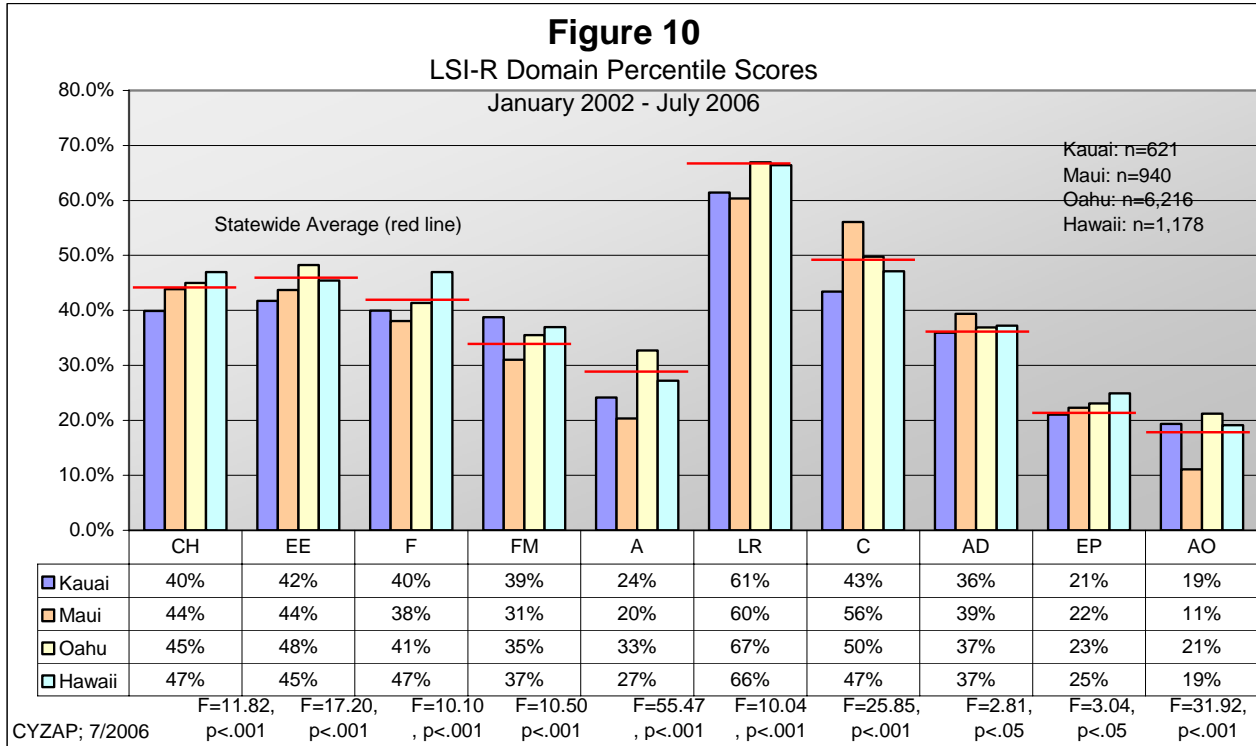
Note: The following risk classification is derived from LSI-R generated scores. Intensive specialized services are recommended for LSI-R=26 or higher.

- Surveillance: LSI-R=36 or higher.
- High: LSI-R 26-35.
- Medium: LSI-R 21-25.
- Low: LSI-R 19-20.
- Administrative: 18 or less.



**Figure 9:** Statewide average Risk Scores from the LSI-R fall within the low-moderate level (21.4), while the statewide Protective Scores average 19.25.

- The differences in Risk Scores between Jurisdictions are statistically significant at the  $p < .001$  level.
- Oahu (21.7) and Hawaii County (21.5) offenders have significantly higher Risk Scores than do Kauai and Maui offenders.
- Maui offenders (20.4) have the highest average Protective Score.
- Oahu offenders have the greatest difference between average Risk and Protective Scores (2.8 differential).



**LEGEND**

- CH - Criminal History percentile
- EE - Education and Employment percentile
- FM - Family and Marital percentile
- A - Accommodation percentile
- LR - Leisure and Recreation percentile
- C - Companions percentile
- AD - Alcohol and Drug Problem percentile
- EP - Emotional and Personal percentile
- AO - Attitudes and Orientation percentile

**Figure 10:** Statewide, *Leisure/Recreation* (66th percentile) represents the highest LSI-R sub-domain, followed by *Companion* (50th percentile), and *Education/Employment* (47th percentile). All LSI-R Domain Percentiles are significantly different by Judicial Circuits.

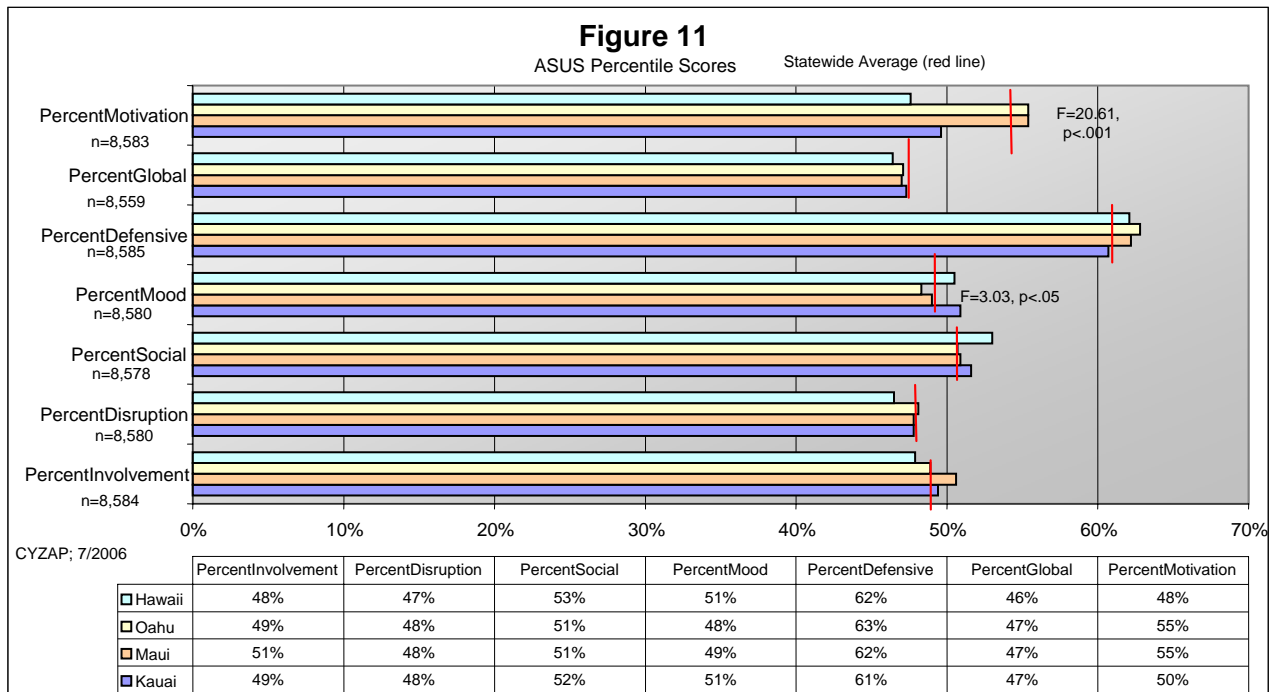
➤ Highest Percentile Score

- Oahu
  - Eepct. (48th percentile)
  - Apct. (33<sup>rd</sup> percentile)
  - LRpct. (67th percentile)
  - AOpct. (21st percentile)
- Hawaii County
  - CHpct. (47th percentile)
  - Fpct. (47th percentile)
  - EPpct. (25th percentile)
- Maui
  - Cpct. (56th percentile)
  - ADpct. (39th percentile)
- Kauai
  - FMpct. (39th percentile)

➤ Lowest Percentile Score

- Maui
  - Fpct. (38th percentile)
  - FMpct. (31st percentile)
  - Apct. (20th percentile)
  - LRpct. (60th percentile)
  - AOpct. (11th percentile)
- Kauai
  - CHpct. (40th percentile)
  - Eepct. (42nd percentile)
  - Cpct. (43rd percentile)
  - ADpct. (36th percentile)
  - EP pct. (21st percentile)

## IV. ASUS Scores



**Figure 11:** Statewide, *Defensive* (63<sup>rd</sup> percentile) and *Motivation* (54<sup>th</sup> percentile) represent the highest domain scores.

- The differences in ASUS domain scores between Jurisdictions are significant for *Motivation* ( $p < .001$ ) and *Mood* ( $p < .05$  level).
- Oahu (48.3 percentile) offenders have the lowest *Mood* scores at the  $p < .05$  level.
- Hawaii County (47.6 percentile) and Kauai (49.6 percentile) offenders have the lowest *Motivation* scores at the  $p < .001$  level.

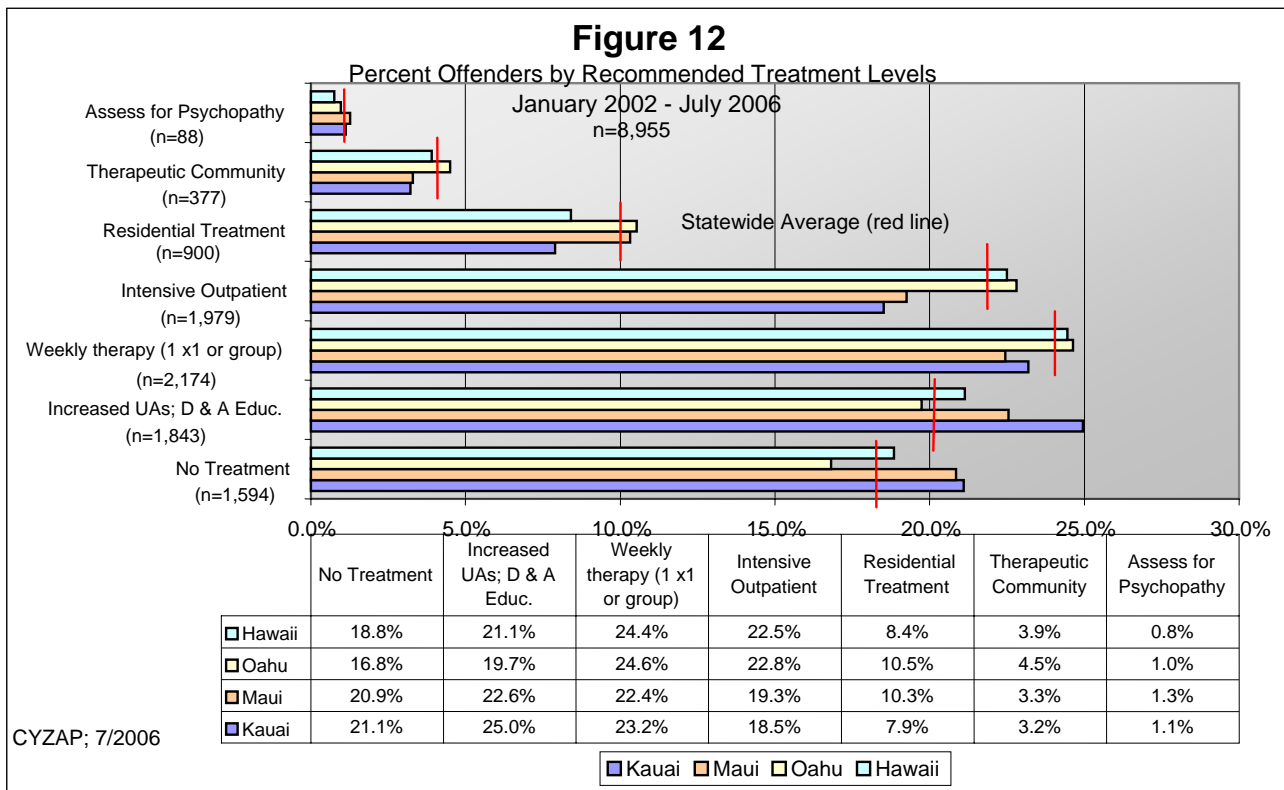
**Technical Notes:**

- Involvement percentiles >60% indicate a history of extensive drug use and most likely a polydrug use pattern.
- Disruption percentiles between 40-50% strongly suggest the need for treatment services, while >50% represent a clear indication for treatment services.
- Mood percentiles >40% strongly suggest need for mental health assessment.

Source: Wanberg, K. A Workshop on Case Planning Utilizing the LSI-R and ASUS: A Convergent Validation Model, September 2006.



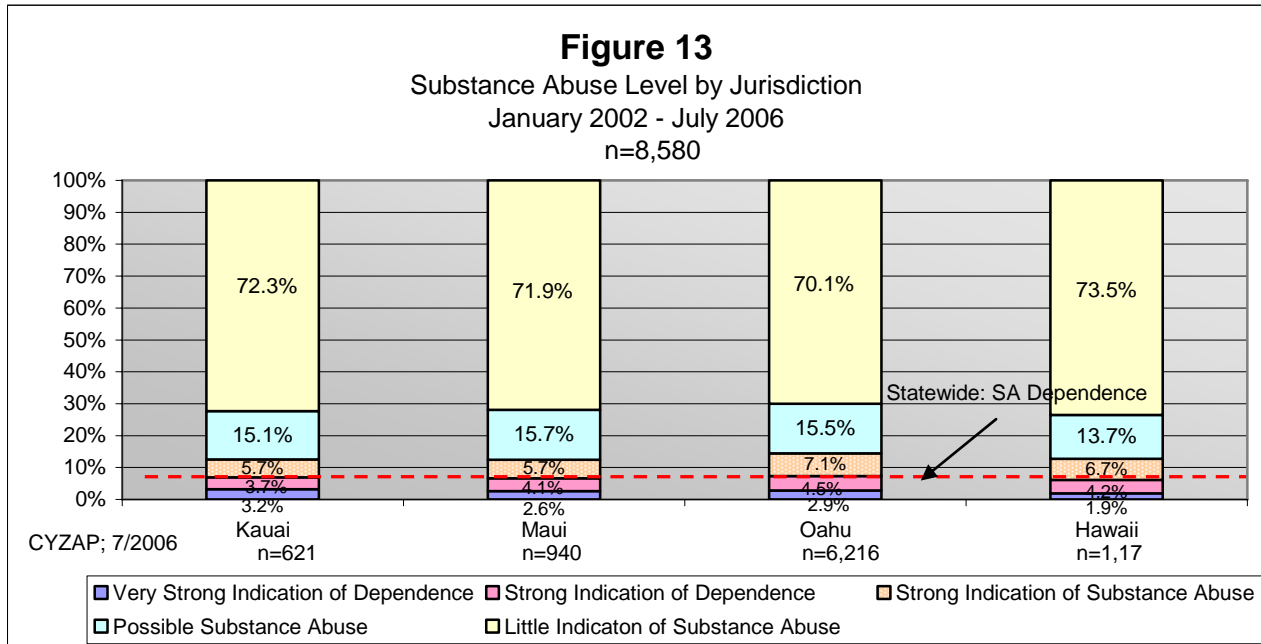
## V. Treatment Level



**Figure 12:** Statewide, 24% of the offenders had a recommended treatment need of *Weekly Therapy (1 x 1 Group Treatment)*, while an additional 22% had a recommended treatment need for *Intensive Outpatient* services.

- Oahu (10.5%) and Maui (10.3%) offenders have the highest *Residential Treatment* recommendations.
- Kauai (25.0%) offenders have the highest *UAs and D & A Education* recommendations.
- Oahu (22.8%) and Hawaii County (22.5%) offenders have the highest *Intensive Outpatient* recommendations.

## VI. Problem Areas



**Figure 13:** Statewide, 7% of the offenders have a *Strong to Very Strong Indication of Substance Dependence*. The majority of offenders (70.8%) have *Little Indication of Substance Abuse*.

- Oahu (7.4%) and Hawaii County (7.1%) offenders have the highest rate of *Strong to Very Strong Indication of Substance Dependence*.
- Oahu (70.1%) offenders have the lowest rate of *Little Indication of Substance Abuse*.
- Hawaii County (73.5%) offenders have the highest rate of *Little Indication of Substance Abuse*.